

A REQUEST FOR PROPOSAL FOR PROFESSIONAL SERVICES CONTRACT

Department of Highways Professional Services Procurement Bulletin 2026-02 Jefferson | 5-80204 | KY-1931

This document constitutes a Request for Proposals for a Professional Service Contract from qualified individuals and organizations to furnish those services as described herein for the Commonwealth of Kentucky, Department of Highways.

I. PROJECT DESCRIPTION

County - Jefferson
Route - KY-1931
Item No. - 5-80204.00
Project Description - Improve safety and reduce congestion on KY-1931 (Manslick Road) from KY-1931 (St. Andrews Church Road) to I-264 (Henry Watterson Expressway). Project will evaluate 3-lane widening and consider accommodations for bicyclists and pedestrians.

II. PROJECT INFORMATION

Project Manager - Kameryn Underwood, P.E.
User Division - Highway Design
Approximate Fee - \$800,000 Preliminary Engineering & Environmental Services (Lump Sum)
Project Funding - SPP (State Funds)
Project Length - Approximately 2.22 miles

III. PURPOSE AND NEED

The purpose of the proposed KY-1931 project is to improve safety and local traffic operations along this route between St. Andrews Church Rd. and I-264. The need is expressed through above average crash rates and congested traffic operations.

Other project goals include accommodating bicyclists and pedestrians, improving emergency response time, minimizing impacts to the environment, ensuring any improvement can handle traffic from other future planned improvements, and evaluating traffic calming measures.

IV. DBE GOAL

The Consultant team may include a DBE Participation Plan with their Response to Announcement to help the Department meet the 11.95% DBE goal established by FHWA. The plan would demonstrate how DBE companies will be mentored or used to assist in the area(s) pertaining to this contract. If included, an additional page will be allowed in the Project Approach (Section 7) to

exhibit this plan. No additional points will be provided in the Evaluation Factors for the DBE Participation Plan.

V. SCOPE OF WORK

The selected Consultant will be responsible for:

- Gathering necessary survey for the project area
- Reviewing and confirming the suggestions found in the 2014 planning study and analyzing the feasibility of those solutions
- Developing construction alternatives for the corridor and intersections
- Coordinating with stakeholders, public officials, and the general public during the public outreach efforts
- Completing the necessary environmental investigations and creating the required NEPA document
- Developing preliminary right-of-way takings for each alternate so that accurate estimates can be created
- Develop utility conflict matrix and determine facilities that are impacted by the alternatives
- Preliminary maintenance of traffic for each alternative
- Phase 1 design construction cost estimates for use at the Preliminary Line and Grade inspection

This project may be advanced to Final Design upon the completion of Preliminary Engineering with a Contract Modification. The selected Consultant may then be required to provide engineering services to perform Final Roadway and Structural Design (if necessary), including the preparation of any design studies, drainage design, right-of-way plans, construction plans, traffic control plans, and cost estimates as well as any other services that KYTC chooses not to perform with in-house forces.

VI. SPECIAL INSTRUCTIONS

The Department may retain any of the advertised services to be performed by in-house state forces.

Instructions for Response to Announcement can be found at:

<https://transportation.ky.gov/ProfessionalServices/Pages/Respond-to-an-Announcement.aspx>

VII. AVAILABLE STUDIES

[Planning Study – Jefferson | 5-480 | KY-1931](#)

[Feasibility Study – Jefferson | 5-436 | I-264 / Manslick Road Interchange](#)

VIII. METHOD OF DESIGN

The selected Consultant shall utilize the most recent CADD Standards for Highway Plans Policy in the development of the highway plans. Refer to the 2019 CADD Standards for ORD V4 Project Development Memo for information pertaining to the latest CADD Standards and plan submittal.

IX. ENVIRONMENTAL SERVICES

Any necessary Environmental Services are expected to be provided by the Consultant. Based on preliminary discussion with the project team and all currently available environmental information for the proposed project location, we anticipate the required environmental document to be no higher than a Categorical Exclusion Level 2. The final environmental document may be elevated (or reduced) to a different level of environmental documentation if environmental investigation leads to an alternative conclusion or changes in ROW occur. Prequalification of various Environmental Services are required to be identified in the Consultant's Response to Announcement.

X. PHOTOGRAMMETRIC SERVICES

The Consultant will provide mapping and will furnish manuscripts in ORD format. Statewide Elevation data and Aerial photography can be found at the following link [KyFromAbove - Kentucky's Aerial Photography & Elevation Data Program](#). The selected Consultant shall supplement this information with conventional surveying as determined during project scoping.

XI. STRUCTURE DESIGN

Structure Design is not anticipated for Preliminary Design. When the project advances to Final Design and if the selected Consultant is retained for Final Design services, the selected Consultant shall do the necessary engineering services to submit to the KYTC an Advanced Situation Folder(s) for the appropriate structure(s). The selected Consultant may be responsible for any necessary Structure Design services. Structure Design of the proposed structure(s) may be added as a Contract Modification. Prequalification in the area of Structure Design is not required to be identified in the Consultant's Response to Announcement.

XII. GEOTECHNICAL SERVICES

The Department is expected to provide all Geotechnical Services required for the project. At any time, if the Department does not have the capacity to provide these services, they may be added by contract modification. Prequalification in the area of Geotechnical Services is not required to be identified in the Consultant's Response to Announcement.

XIII. TRAFFIC ENGINEERING

The Department will provide all traffic projections and related information.

The selected Consultant will provide the analysis of the existing and proposed operations. Traffic Signal Design and Lighting Design services, if necessary for the completion of Final Design, may be added by Contract Modification at the appropriate time. At any time, if the Department has the capacity to provide these services, the Department may retain the advertised traffic services. Prequalification in the area of Traffic Engineering is not required to be identified in the Consultant's Response to Announcement.

XIV. UTILITIES

The selected Consultant shall acquire adequate information regarding existing utility features to identify existing utility facilities within the project area, document and confirm those that may be negatively impacted by the project. The selected Consultant shall bring attention any potential conflicts with existing utility facilities that may result in significant cost or time to relocate. The selected Consultant complete or contribute to a utility conflict matrix, documenting the existing utility facilities that may be impacted by the project. The Consultant shall document or confirm the following for each utility in the conflict matrix: type of utility, owner of utility, quantify the extent they may be impacted, potential impacts to project budget, potential impact to project schedule, confidence of utility location depicted, and recommendations for remedy. Prequalification in the area of Utility Design is not required to be identified in the Consultant's Response to Announcement.

XV. PREQUALIFICATION REQUIREMENTS

To respond to this project the Consultant must be prequalified in the following areas by the response due date of this advertisement:

ENVIRONMENTAL & UST SERVICES

- UST & Hazmat Preliminary Site Assessment (Phase 1)

ENVIRONMENTAL AQUATIC & TERRESTRIAL ECOSYSTEMS ANALYSIS

- Terrestrial Zoology
- Water Quality

ENVIRONMENTAL ARCHAEOLOGY & OTHER SERVICES

- Prehistoric Archaeology
- Socio-Economic Analysis
- Historic Archaeology
- Environmental Document Writing & Coordination
- Cultural-Historic Analysis

ROADWAY DESIGN

- Rural Roadway Design
- Surveying
- Urban Roadway Design

TRANSPORTATION PLANNING

- Pedestrian & Bicycle Planning & Design

Geotechnical Services* (see note below)

- *Geotechnical Engineering**
- *Geotechnical Drilling**
- *Geotechnical Laboratory Testing**

Structure Design* (see note below)

- *Spans Under 500 Feet**

Traffic Engineering* (see note below)

- *Electrical Engineering Roadway Lighting**
- *Traffic Engineering**

- *Electrical Engineering Traffic Signals**

Utility Design* (see note below)

- *Electrical Level 1**
- *Gas Level 1**
- *Utility Preconstruction Coordination**
- *Water & Sewer Level 1**
- *Water & Sewer Level 2**

** Note – These prequalifications are not required with the initial proposal as it is uncertain to the extent practicable if they are necessary. Should these services become necessary during the delivery of the project in this or future phases, the selected Consultant team must obtain the required qualifications before providing those services or bring on a prequalified subconsultant at that time.*

XVI. PROCUREMENT SCHEDULE

Dates other than Response Date are tentative and provided for information only.

- Advertisement Date: August 12, 2025
- Response Date: September 3, 2025 by 4:30 PM ET (Frankfort Time)
- First Selection Meeting: September 8, 2025
- Final Selection: September 24, 2025
- Pre-Design Conference: October 1, 2025
- Consultant Fee Proposal: October 10, 2025
- Contract Negotiations: October 22, 2025
- Notice to Proceed: November 12, 2025

XVII. PROJECT SCHEDULE

- Alternate Review Meeting May 1, 2026
- Public Meeting July 15, 2026
- PL&G Inspection October 15, 2026
- NEPA Document December 1, 2026
- Submit DES & Electronic Plans January 15, 2027

XVIII. EVALUATION FACTORS

Consultants will be evaluated by the selection committee based on the following weighted factors:

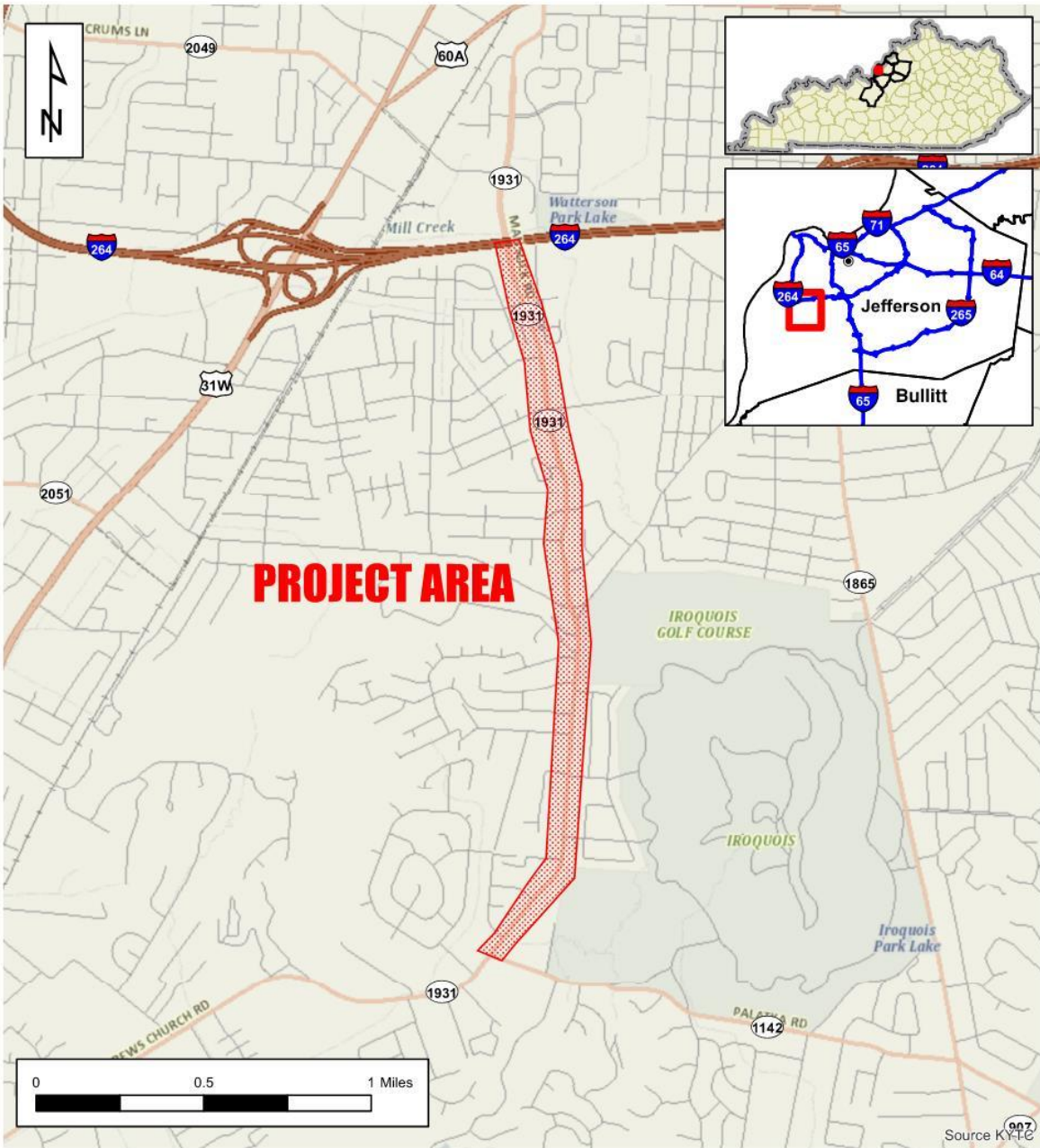
1. Project approach and proposed procedures to accomplish the services for the project. (20 Points)
2. Relative experience of consultant personnel assigned to project team with highway project for KYTC and/or federal, local or other state governmental agencies. (15 Points)
3. Past record of performance on projects similar in type and complexity. (15 Points)
4. Capacity to comply with project schedule. (10 Points)

5. The Consultant demonstrates a comprehensive understanding of safety strategies and the ability to generate meaningful ideas that can measurably enhance the safety of the completed project. This includes both the immediate effectiveness and the long-term safety impacts of the finished facility. (10 Points)
6. Knowledge of the locality and familiarity of the general geographic area. (2 Points)

XIX. SELECTION COMMITTEE MEMBERS

1. Kameryn Underwood, P.E., User Division
2. Karl Sawyer, P.E., User Division
3. Zachary Neihof, P.E., Secretary's Pool
4. Casey Smith, P.E., Secretary's Pool
5. Brian Wood, P.E., Governor's Pool

XX. AREA MAP



Professional Services



**Jefferson County
Item No. 5-80204
KY 1931**

Disclaimer: KYTC provides this map as a reference only. Users are to validate information independently.
Copyright: 2025 Kentucky Transportation Cabinet. All rights reserved.

Date: 7/22/2025